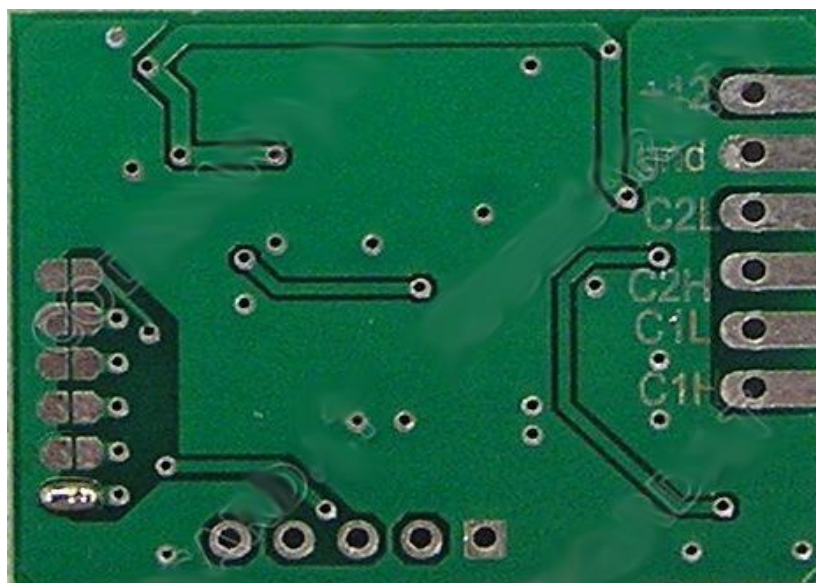


# CODECARD Mercedes CAN filter connection manual

## 1. Mercedes ML W164, GL X164, R-class W251 installation instructions

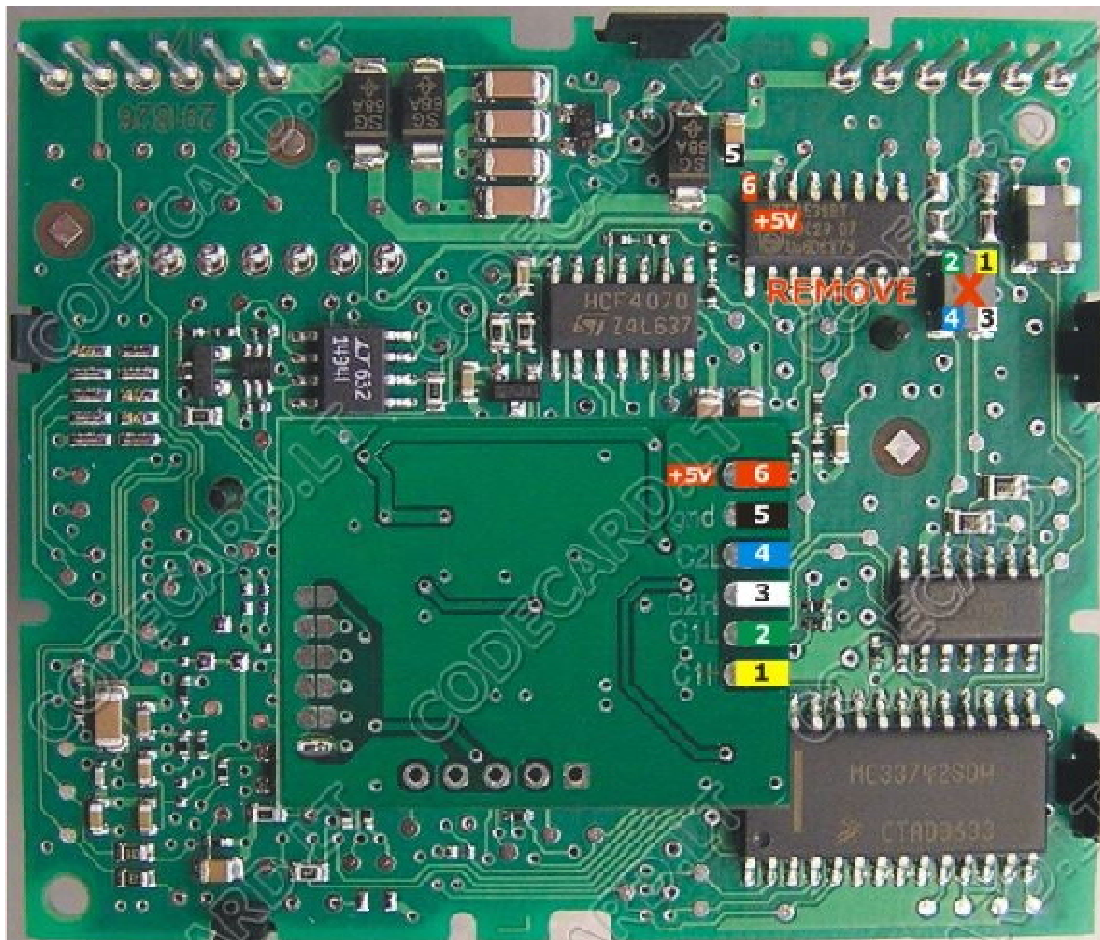
In these models Mercedes use 2 kinds of EZS (also named EIS-electronic ignition switch): in older cars <2007 - with 9S12 processor, in new cars 2007+ - EZS with AMAZONAS processor. Mercedes CAN filter will work with both EZS types. For installation remove EZS from car.

- 2 For first prepare Mercedes CAN filter board: remove resistor marked in picture and solder first configuration points. Use fine KYNAR wire for installation.

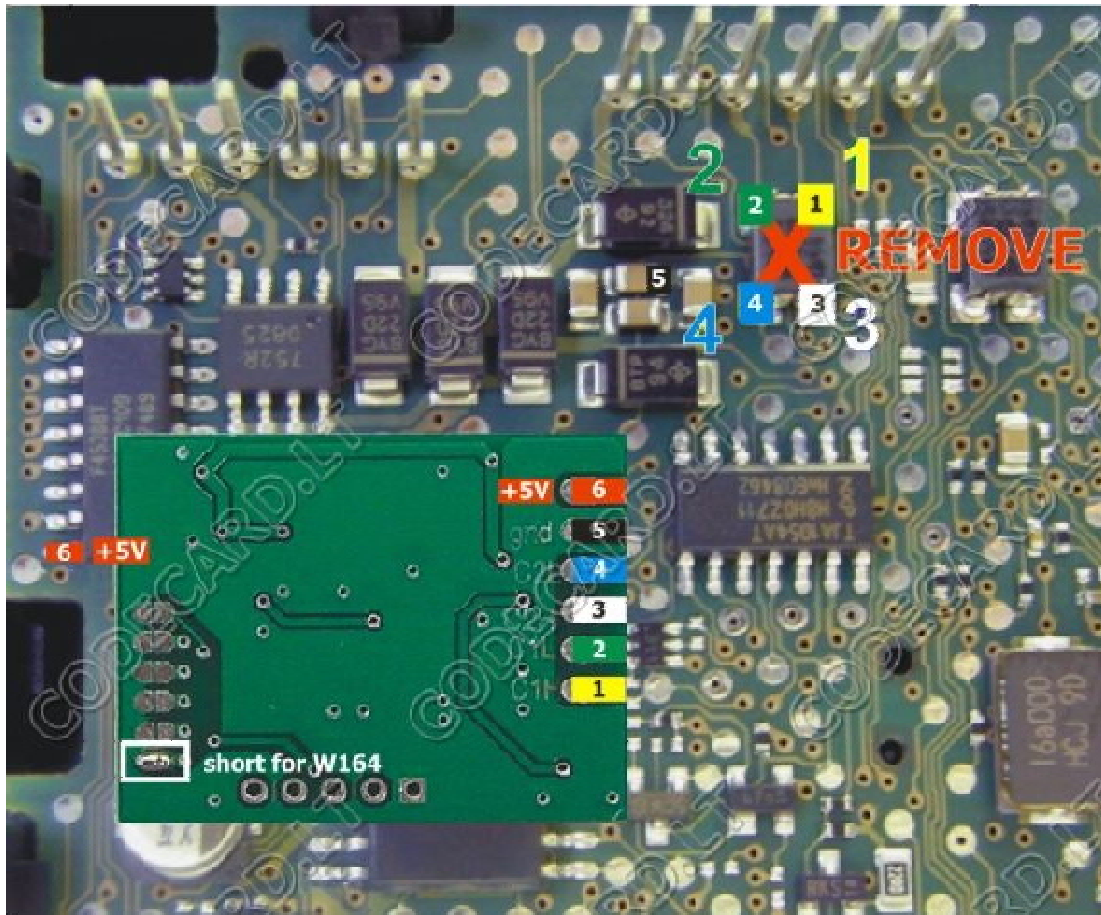


Remove from EZS board SMD part marked with red "X". With short, good isolated wire connect Mercedes CAN filter to EZS board according picture: 1-1 (C1H), 2-2(C1L), 3-3(C2H), 4-4(C2L), 5- 5(GND), and 6-6 (+5V).

Mercedes ML W164, GL X164, R-class W251      Type 1:



Mercedes ML W164, GL X164, R-class W251 Type 2:

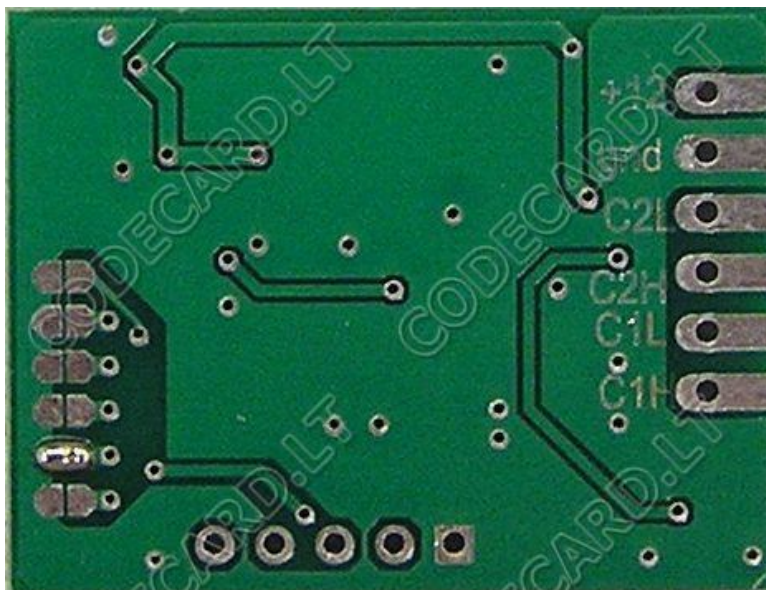
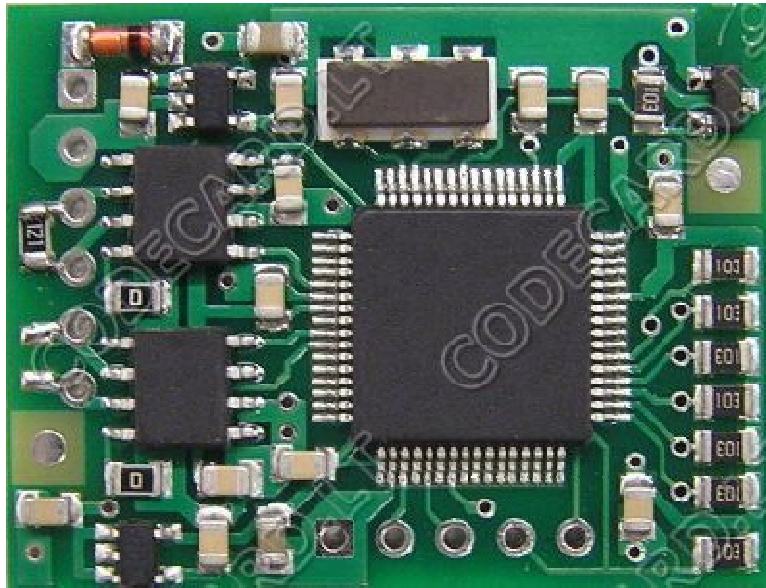


After connection insulate Mercedes CAN filter board with heat shrink or insulation tape. Put it carefully to EZS casing.

## 2. Mercedes C-class W204 installation instructions.

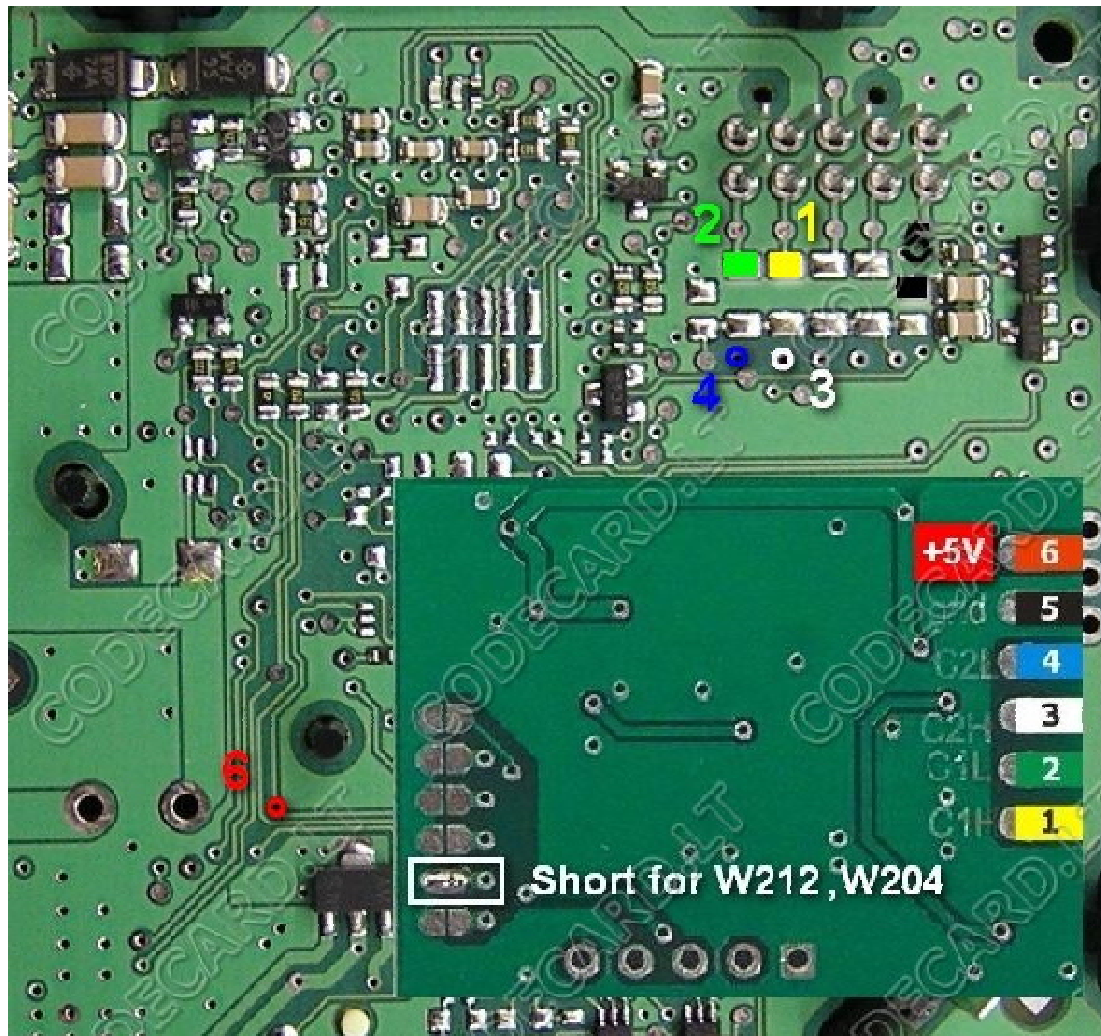
In these models Mercedes use new EZS with NEC processor marked IRLAND or HAVANNA (also named EIS-electronic ignition switch). Mercedes CAN filter will work with both EZS types. For installation remove EZS from car.

? For first prepare Mercedes CAN filter board: check - resistor 121 must be soldered and solder second configuration points like in pictures.

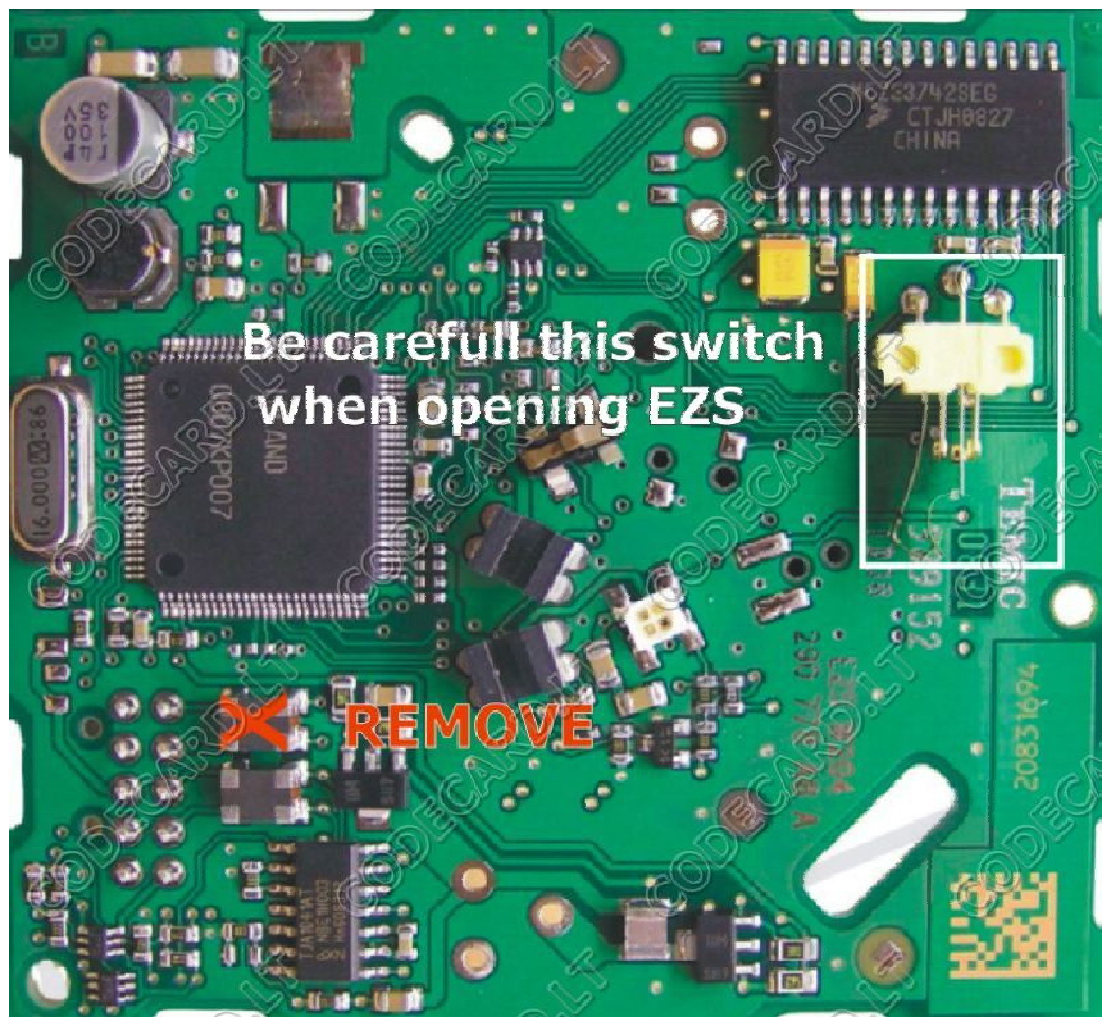




Remove EZS board from casing. Carefully disconnect board from mechanic – look on picture.



Remove from EZS board SMD part marked with red " X". With short, good isolated wire connect Mercedes CAN filter to EZS board according picture: 1-1 (C1H), 2-2(C1L), 3-3(C2H), 4-4(C2L), 5-5(GND), and 6-6 (+5V).

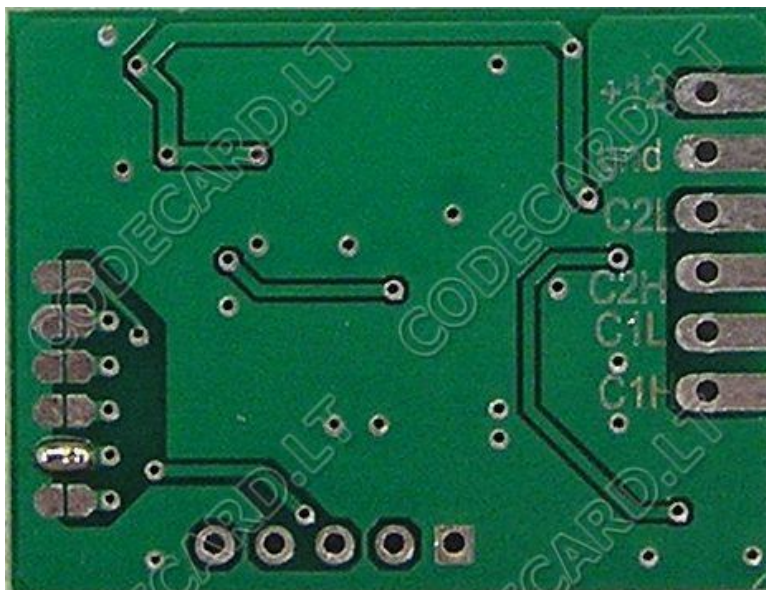
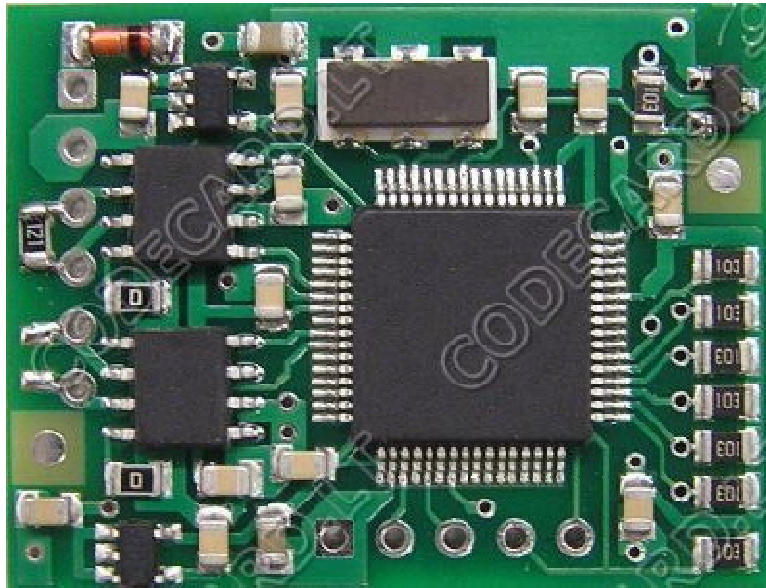


After connection insulate Mercedes CAN filter board with heat shrink or insulation tape. Put it carefully to EZS casing.

### 3. Mercedes E-class W212 installation instructions.

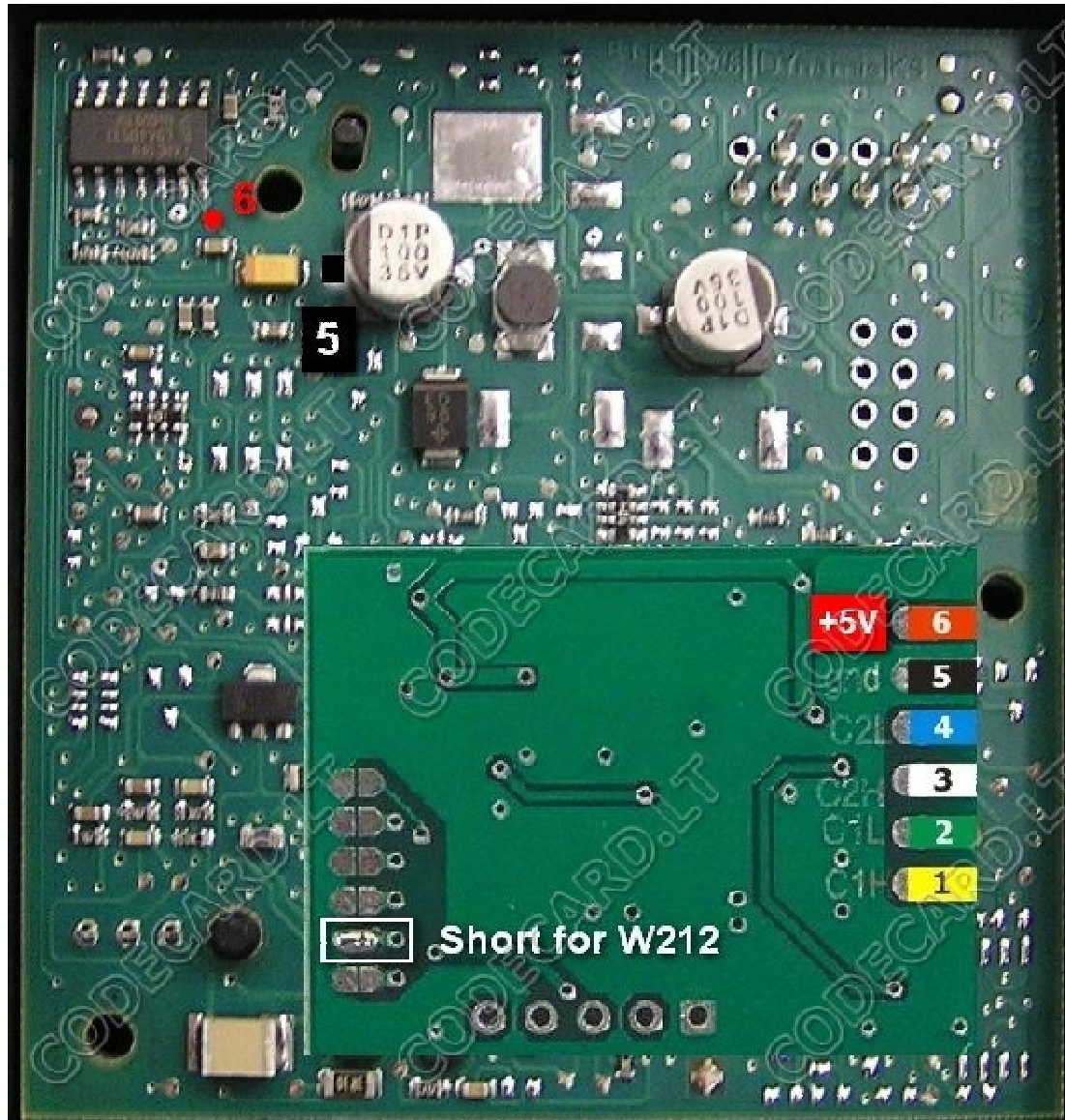
In these models Mercedes use new EZS with NEC processor marked JURA (also named EIS-electronic ignition switch). Mercedes CAN filter will work with both EZS types. For installation remove EZS from car.

? For first prepare Mercedes CAN filter board: check - resistor 121 must be soldered and solder second configuration points like in pictures.



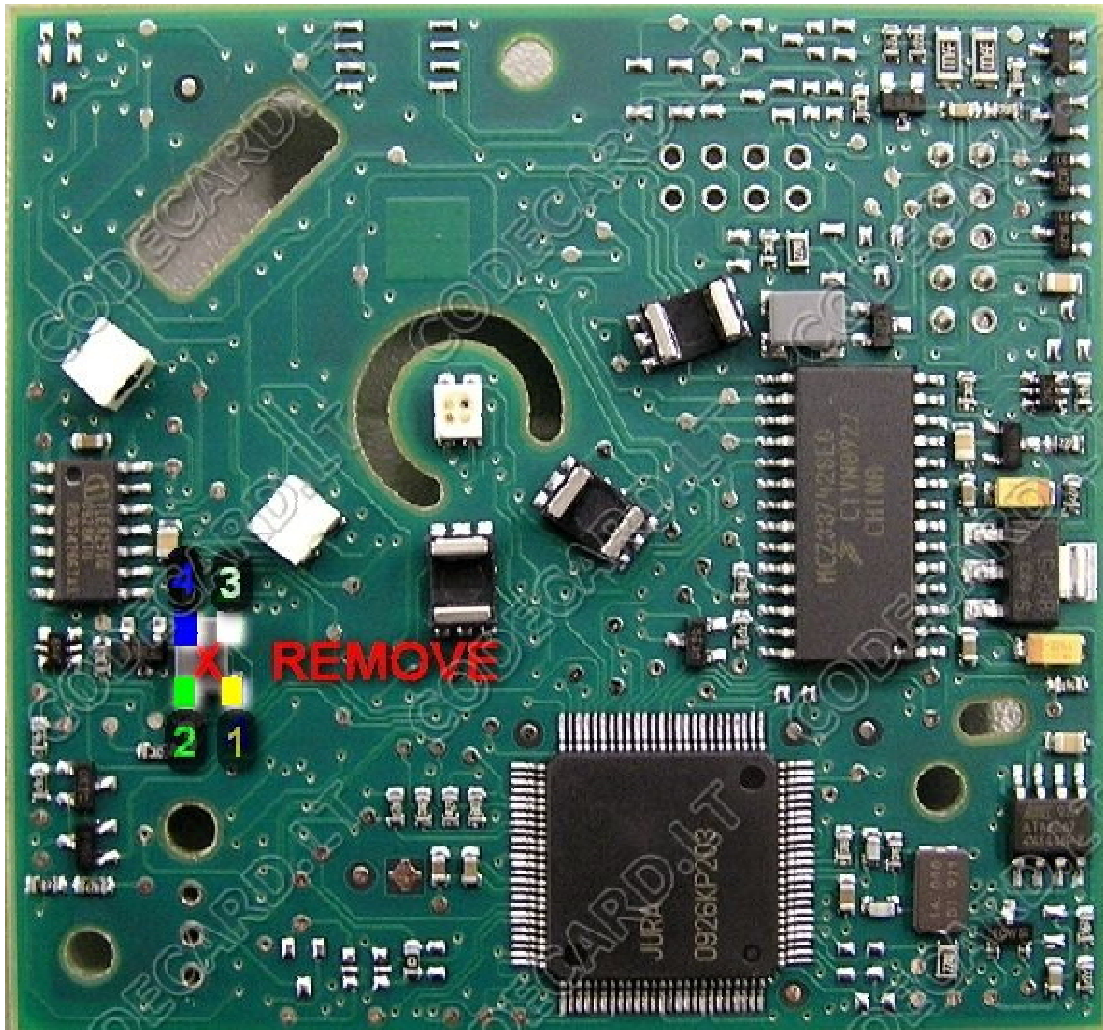


Remove EZS board from casing. Carefully disconnect board from mechanic – look on picture.



Remove from EZS board SMD part marked with red “ X”. With short, good isolated wire connect Mercedes CAN filter to EZS board according picture: 1-1 (C1H), 2-2(C1L), 3-3(C2H), 4-4(C2L), 5-5(GND), and 6-6 (+5V).



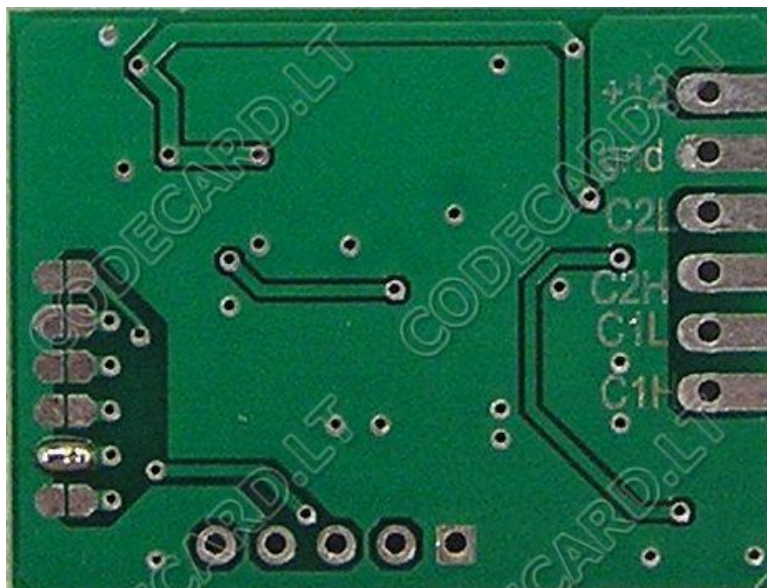
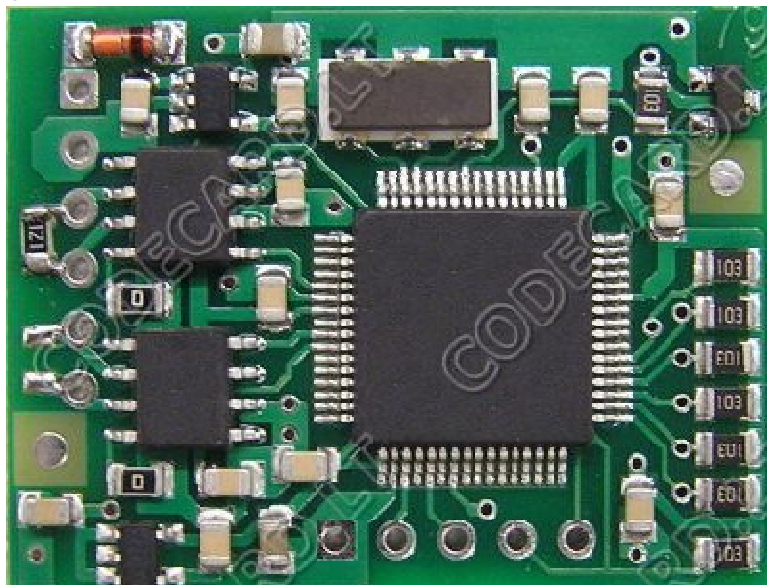


After connection insulate Mercedes CAN filter board with heat shrink or insulation tape. Put it carefully to EZS casing.

#### 4. Mercedes S-class W221 installation instructions

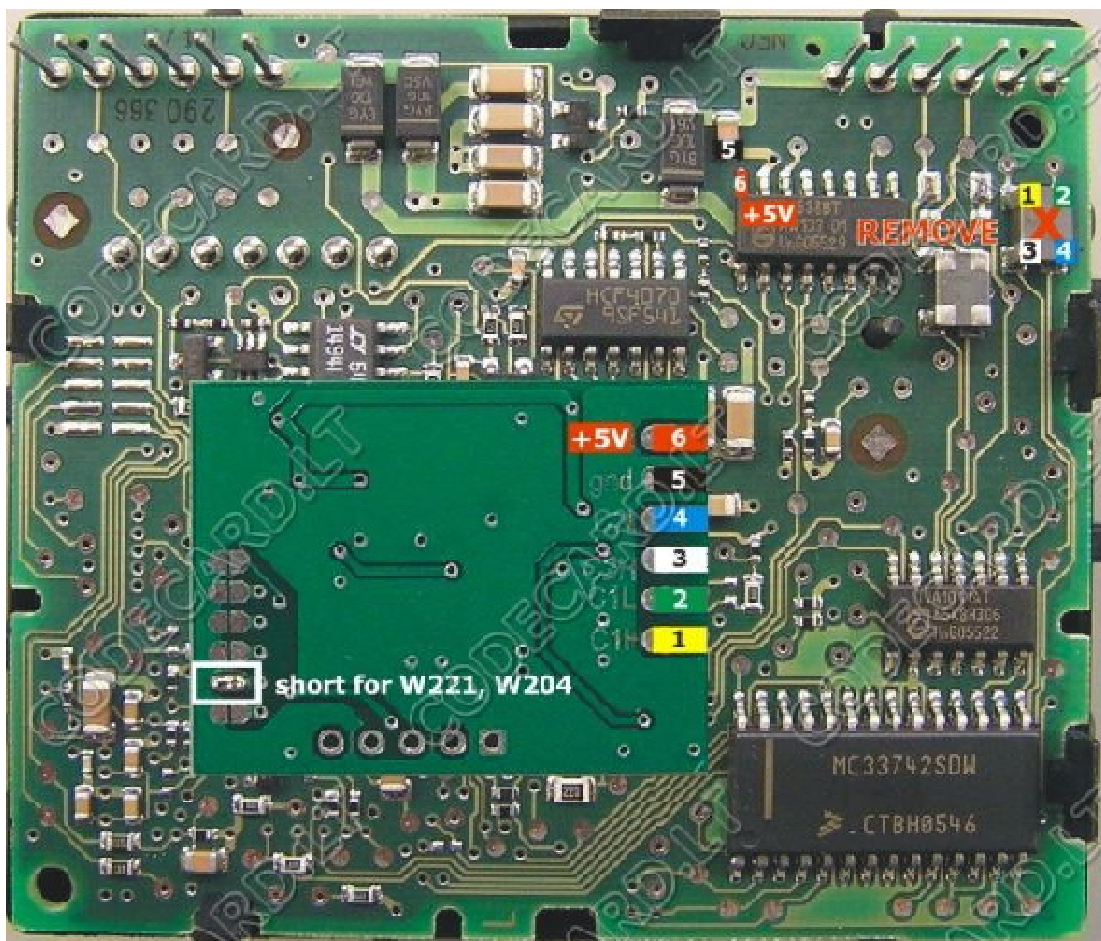
Mercedes W221 use new EZS with NEC processor marked IRLAND or HAVANNA (also named EIS-electronic ignition switch). Mercedes CAN filter will work with both EZS types. For installation remove EZS from car.

? For first prepare Mercedes CAN filter board: check - resistor 121 must be soldered and solder second configuration points like in pictures.



Remove from EZS board SMD part marked with red “ X”. With short, good isolated wire connect Mercedes CAN filter to EZS board according picture: 1-1 (C1H), 2-2(C1L), 3-3(C2H), 4-4(C2L), 5- 5(GND), and 6-6 (+5V).

Mercedes S-class W221 Type 1:



Mercedes S-class W221 Type 2:

